





A mark of excellence

Gain a University of London degree, deepen your knowledge and develop your career in the field of education.

Quality of learning

The programmes in this leaflet are developed by academics at the IOE, UCL's Faculty of Education and Society, recognised as the world's leading institution for Education in the 2023 QS World Subject Rankings.

Worldwide relevance

The programme is designed to be of worldwide relevance and has been updated to reflect online teaching common during the pandemic. You will collaborate online and share professional expertise with other students from diverse cultures, education systems and international contexts.

Access a wealth of resources

Comprehensive study materials written by subject experts at the Institute, as well as access to online discussions and tutorials.

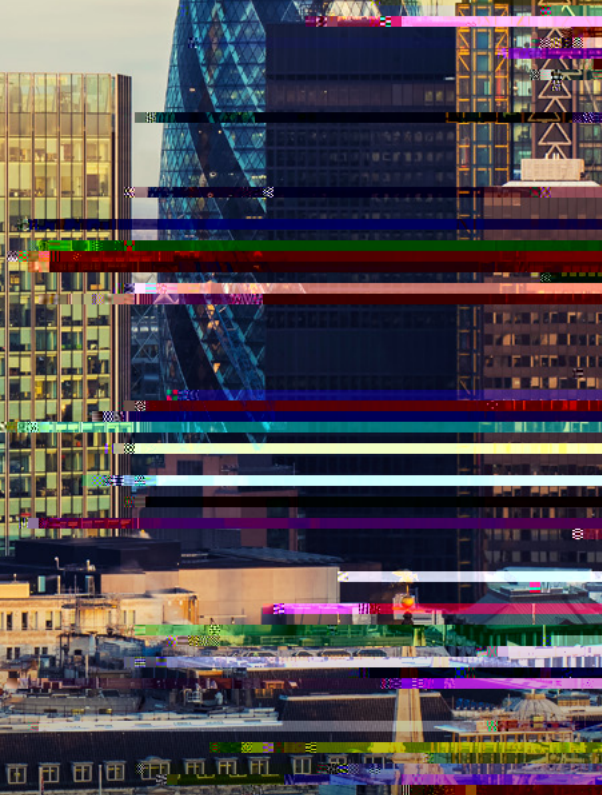
5

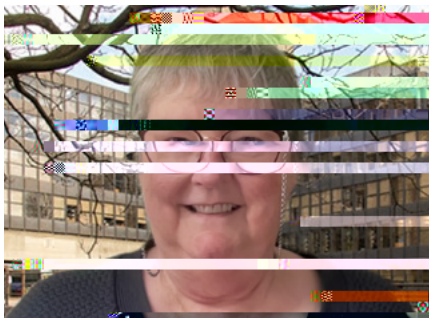
Flexible learning



C

CONSTRUCTION





A trusted name in global education



T D PGCE: ?

The PGCE: Teacher Development is delivered online with no requirement to come to the UK to study.

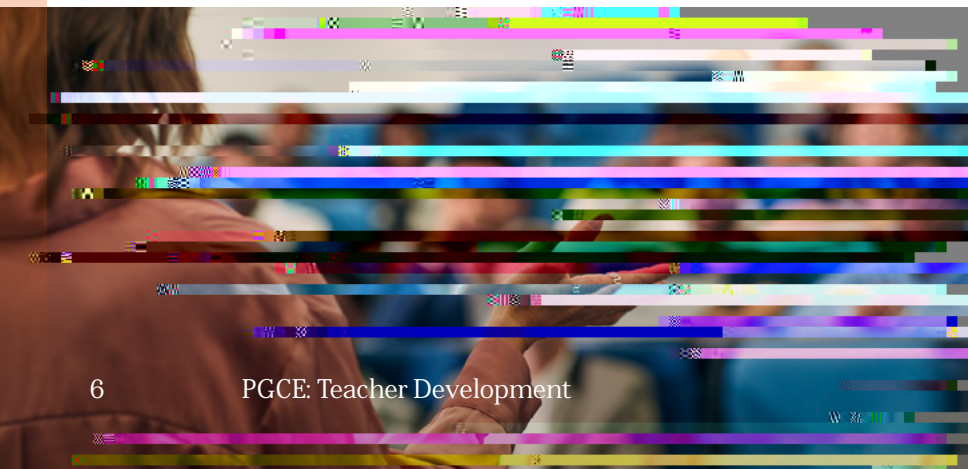
This programme can prepare you to go on to master's level study in Education through exploring teaching in your own setting. As a graduate of this programme, you will:

- develop and enhance your professional teaching and learning practice so as to respond to necessary changes in practice such as teaching online
- work with colleagues to engage and reflect on successful teaching practices, including your own
- understand your own teaching practice and other models in the context of research undertaken by academics of IOE, UCL's Faculty of Education and Society

- gain a University of London PGCE: Teacher Development (FHEQ Level 6). This equates to 60 credits, and the level of study is the same as in the final year of an undergraduate honours degree. It will help students who may not have had the opportunity to get an honours-level undergraduate degree when completing earlier study, and may also help qualify you for master's level study.

In some countries, qualifications earned by distance and flexible learning may not be recognised by certain authorities or regulators for the purposes of public sector employment or further study. We advise you to explore the local recognition status before you register, even if you plan to receive support from a local teaching centre. However, whether recognised or not, studying this programme will benefit your professional practice.

The programme does not offer UK Qualified Teacher Status (QTS).



How you study

The programme is delivered online and there is no requirement to come to the UK as part of your studies. It is a self-guided course, much like an enhanced MOOC, which has been designed to support your professional development. You will work alongside a self-identified Critical Friend and fellow students.

Your professional development will be supplemented and supported by our high-quality materials. Each module offers a structured learning experience with a coherent set of learning outcomes and assessment criteria to support you in your study.

Online support

When you register, we will give you access to the Student Portal. You can then access your University of London email account and other key resources including the:

- **Virtual Learning Environment (VLE)** which offers online learning support, access to peer- and self-review activities, informal discussion areas and links to resources
 - **Online Library** which contains thousands of journal articles. A dedicated helpdesk is available if you have any difficulties in finding what you need.
-

Study materials

All essential resources, activities, videos, discussions and support are provided through the VLE. This allows you to fit your studies around your work commitments. There is no need to purchase additional textbooks.

A handbook will also be provided so that your Critical Friend (who should not be your line manager or head teacher) understands their role. They will observe your professional practice, whether in person or using digital tools, and make notes to support reflective discussions.

Time commitment

The flexible approach to learning allows students to complete the programme in a minimum of one academic year to a maximum of two years.

There are two sessions each academic year, enabling students to defer study of the second module to the following academic year. Students undertake one module per session, starting with Module 1: *Thinking about learning*.

Although there is flexibility in timing of modules, each module does have to be studied within its six-month presentation.





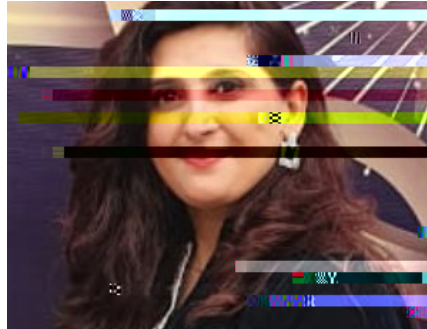
How to apply

Please refer to the PGCE: Teacher Development web pages for details on how to apply, application and registration deadlines and up-to-date information on course fees: london.ac.uk/teacher-development

Fees

The total fee payable to the University of London for 2024–2025 will be published on our website once confirmed. On average, fees incur a five per cent year-on-year increase. For the latest information on programme fees, please visit: london.ac.uk/fees

Please note: student fees shown on our website are net of any local VAT, Goods and Services Tax (GST) or any other sales tax payable by the student in their country of residence. Where the University is required to add VAT, GST or any other sales tax at the local statutory rate, this will be added to the fees shown during the payment process. For students resident in the UK, our fees are exempt from VAT.



Bushra Khan

2024 Graduate

'Investing my time in this programme has proved to be quite enriching with exposure to new perspectives and learning experiences. I have been given the opportunity to cultivate my knowledge around teaching and assessment modules with effective tools and strategies, that in turn cater to my reflection regarding my students' learning, development and growth.'



The information contained in this prospectus was correct at the date of publication but may be subject to change. The University does not intend by publication or distribution of this prospectus to create any contractual or other legal relation with applicants, registered students, their advisers or any other persons. For the most up-to-date information, please visit our website.

Published by University of London.

Copyright © University of London, January 2024.



This material is available in alternative formats upon request.
Please contact: special.arrangements@london.ac.uk