

BEIKO

*get the b*

**Please read this manual first!**

Dear Customer,

We hope that your product, which has been produced in modern factories and

# CONTENTS

---

<b>1 Your refrigerator</b>	<b>4</b>	<b>4 Before operating</b>	<b>15</b>
		EF3DF;@9 .....	15
<b>2 Warnings</b>	<b>5</b>	<b>5 Using your refrigerator</b>	<b>16</b>
7 WlfqUS^DWtgdW_ W fe .....	6	F7? B7D3FGD7 5A@FDA > 3@6	
I Sd [ Y~ FZ[e 3bb[S` UW? gef 4W		36<GEF? 7@F A 8 8D;697 .....	16
Earthed .....	6	5: ;>>7D 5A? B3DF? 7@F 6D3I 7D..	
Energy Saving Tips .....	7		
<b>3 Installation</b>	<b>8</b>	<b>6 Maintenance and cleaning</b>	<b>17</b>
FD3@EBA DF3F;A @ ;@EFDG5F;A @E . 8			
;@EF3>>3F;A @ ;@EFDG5F;A @E .....	8	<b>7 Do's and Don'ts</b>	<b>18</b>
678DA EF;@9 .....	10		
D7B>35;@9 F: 7 ;@F7D;AD >;9: F			
4G>4 .....	11		
D7H7DE;@9 F: 7 6AAD .....	12		





## Electrical Requirements

When connecting the appliance to a socket make sure that the voltage and the frequency shown on the rating plate inside the appliance corresponds to your electricity supply.

For the refrigerator, see the inner liner.

We recommend that this appliance be connected to the mains supply via a suitable switched and fused socket. The appliance must be positioned so that the plug is accessible.

Should the mains lead of the appliance become damaged or should it need replacing at any time, it must be replaced by a special purpose made mains lead which can only be obtained from a **BEKO** Authorised Service Agent.

## Warning! This Appliance Must Be Earthed


If the fitted moulded plug is not suitable for your socket, then the plug should be cut off and an appropriate plug fitted. Destroy the old plug which is cut off as a plug with bared cord and use it elsewhere in the house.

The moulded plug on this appliance incorporates a 13 A fuse. Should the fuse need to be replaced a 3EF34734 13A fuse of the same rating must be used. Do not forget to refit the fuse cover. In the event of losing the fuse cover the plug must not be used until a replacement fuse cover has been fitted.

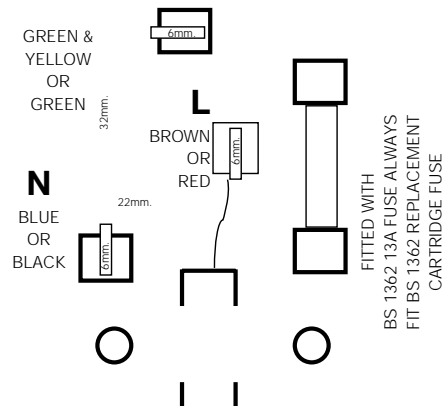
Colour of the replacement fuse cover must be the same colour as that visible on the pin face of the plug. Fuse covers are available from any good electrical store.

## Important! Fitting A Different Plug

As the colours of the wires in the mains lead of this appliance may not correspond with the coloured markings identifying the terminals in your plug proceed as follows: (See diagram)

1. Connect the green-yellow or green or green and yellow or green marked 'E' or with the symbol  or coloured green and yellow or green.
2. Connect the blue or black coloured black.
3. Connect the terminal in the plug marked 'L' or coloured red.

With alternative plugs a 13 A fuse must be fitted either in the plug or adaptor or in the main fuse box. If in doubt contact a qualified electrician.



## Energy Saving Tips

**1-** Ensure your appliance is installed in a well ventilated area.

**2-** Ensure the time between buying and using your appliance is kept at minimum, particularly in summer. We recommend you use a cool bag or a special carrier bag to carry perishable food.

**3-** Do not leave your appliance open longer than necessary and ensure they are closed properly after each opening.

**4-** Use frozen food as an ice pack to assist cooling in the fridge.

## 3 Installation

### TRANSPORTATION INSTRUCTIONS

1. The appliance should be transported only in a vertical upright position. The packing as supplied must be intact during transportation.
  2. If during the course of transport the appliance has to be transported on its right hand side when standing in the front of the appliance. After bringing it to upright position, it must not be operated for at least 4 hours to allow the system to settle.
  3. Failure to comply with the above instructions could result in damage occurring to the appliance. The manufacturer will not be held responsible if these instructions are disregarded.
  4. The appliance must be protected against rain, moisture and other atmospheric influences.
  5. When positioning your appliance take care not to damage your flooring, pipes, wall coverings etc. Do not move the appliance by pulling by the door or handle.
  6. Empty any water in the drain tray before moving. See section 'Defrosting' and 'Care & cleaning' for further information.
- While cleaning / carrying the appliance to avoid touching the bottom of the condenser metal wires at the back of the appliance as you might injure your fingers and hands.
- IMPORTANT :** This appliance is not designed for stacking with any other appliance.

Do not attempt to sit or stand on top of your appliance as it is not designed for such use. You could injure yourself or damage the appliance.

The mains cable is not caught under the appliance during and after carrying / moving the appliance, to avoid the mains cable becoming cut or damaged."

Do not allow children to play with the appliance or tamper with the controls.

Liability should the instructions not be followed.

### INSTALLATION INSTRUCTIONS

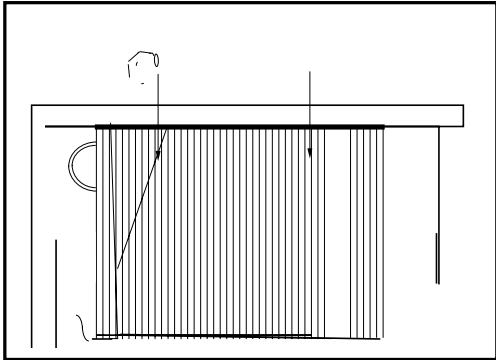
1. The space in the room where the appliance is installed must not be smaller than 10 cubic metres.
2. If possible avoid placing the appliance near cookers, radiators or in direct sunlight as this will cause the compressor to run for long periods. If installed next to a source of heat or refrigerator, maintain the following minimum side clearances:

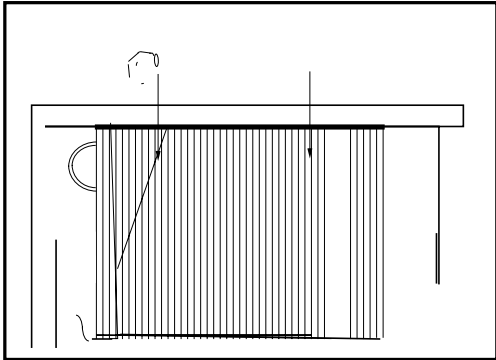


From Cookers	2" (50 mm)
From Radiators	12" (300 mm)
From Refrigerators or Freezers	1" (25 mm)

Allow a minimum of 60 mm (2.4 inches) between the top of the fridge and the ceiling or the underside of a wall cupboard.

3. Make sure that sufficient room is provided around the appliance to ensure free air circulation.

4. Fit the two plastic wall spacers supplied with the appliance to the condenser on the back of the refrigerator by rotating 1/4 turn (see ).



4. Fresh wrapped produce can be placed on the shelf. Fresh fruit and vegetables should be cleaned and stored in the salad crisper bin.

' ž 4affVø US` TWb`SUW` gbdYZf [ the door rack.

## REPLACING THE INTERIOR LIGHT BULB

Should the light fail to work, proceed as follows.

1. Switch off at the socket outlet and pull out the mains plug.

You may find it useful to remove shelves for easy access.

2. Turn the light diffuser cover clockwise to remove it from the light fixture.

3. Pull off the light diffuser cover and remove the light bulb.

4. Insert the new light bulb into the light fixture and turn the light diffuser cover clockwise to secure it. Do not touch the glass of the new light bulb with your fingers. If you do, the bulb may become hot and could shatter. Wash your hands with soap and water after handling the bulb.

6. Carefully dispose of the burnt-out light bulb immediately.

7. For more information on the safe disposal of light bulbs, visit [www.electrical.org.uk](http://www.electrical.org.uk) or contact your local council. For more information on the safe disposal of light bulbs, visit [www.electrical.org.uk](http://www.electrical.org.uk) or contact your local council. For more information on the safe disposal of light bulbs, visit [www.electrical.org.uk](http://www.electrical.org.uk) or contact your local council.



## REVERSING THE DOOR

We recommend that you reverse the door before switching on for the first time.

Use a flat and cross-headed screwdrivers, a pair of pliers. Spare Parts supplied in the plastic bag: The following parts, which are exclusively for left hand side fitted hinge operation are supplied in a plastic bag with the appliance:

- Door top trim hinge covers – there are 2 different parts, one for each side of top trim.

We suggest you keep all the parts supplied in the plastic bag and also parts, which have been removed when reversing the door, in a safe place for possible future, re-use.

**IMPORTANT:** We suggest you ask somebody to help you when moving the appliance around and to hold the door when removing / re-fitting hinges and the door to avoid any injury and damage to the product.

Please refer to diagrams supplied. To follow numbers in brackets below, refer to the main diagram.

1. Switch off the appliance at the socket outlet and pull out the mains plug.

Remove the top cover and food inside the appliance.

Remove the top hinge covers on both sides of front top panel using a small flat-headed screwdriver.

Remove the top hinge cover on both sides of front top panel.

Remove the top hinge cover on both sides of front top panel.

Remove the top hinge cover on both sides of front top panel.

Remove the top hinge cover on both sides of front top panel.

Remove the top hinge cover on both sides of front top panel.



1

1

## 4 Before operating

---

### STARTING

Final Check

check that:

1. The front feet have been adjusted so the appliance is level.
2. The interior is dry and air can circulate freely.
3. Clean the interior as recommended
4. Insert the plug into the wall socket and switch on the electricity supply. When the door is open the interior light will come on.
5. You will hear a noise as the compressor starts up. The liquid and gases sealed within the refrigeration system may also give rise to noise, whether the compressor is running or not which is quite normal.
6. We recommend that you set the monitor the temperature to ensure the appliance maintains desired storage temperatures (See section
7. Do not load the appliance immediately it is switched on. Wait until the correct storage temperature has been reached.

We recommend that you check the temperature with an accurate thermometer

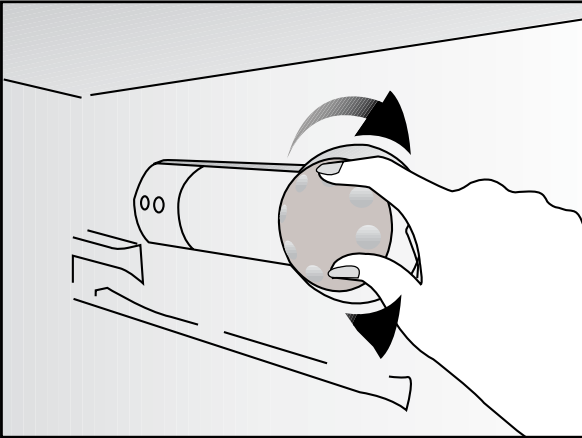
(see; Temperature Control and

### Important Note :

Ice formation at the back is normal, do as they may cause the cooling system to block and therefore operate less efficiently.

## 5 Using your refrigerator

### TEMPERATURE CONTROL AND ADJUSTMENT OF FRIDGE



In case of a temporary ice build up in the fridge

Settings may be made from 1 to 5, the coldest position. When the appliance is switched on for the first time, the thermostat should be adjusted so that after 24 hours, the average fridge temperature is no higher than +5°C

We recommend you set the thermostat halfway between the 1 and 5 setting and monitor to obtain the desired temperature i. e. towards 5 you will obtain a colder fridge temperature and vice versa. Some sections of the fridge may be cooler or warmer ( such as the salad crisper and the top part of the

turn the thermostat knob to a half way position. Frequent door opening cause higher internal temperatures, so close the door as soon as possible after use.



## 6 Maintenance and cleaning

---

\*\* We recommend that you switch off the larder refrigerator at the socket outlet

and pull out the mains plug before cleaning.

Do not use any abrasive substances, soap, household

cleaner, detergent and wax polish for cleaning.

Wipe the cabinet of the refrigerator and wipe it dry.

Use a solution of one teaspoon of bicarbonate of soda to one pint of water to clean the interior and wipe it dry.

\*\* Make sure that no water enters the temperature control box.

\*\* If the larder refrigerator is not going to be used for a long period of time switch it off, remove all food, clean it and leave the door ajar.

\*\* Any dust that gathers on the condenser, which is located at the back of the appliance, should be removed once a year with a vacuum cleaner.

\*\* Check door seals regularly to ensure they are clean and free from food particles.

Remove the door tray.

Remove the door tray by pulling the contents and then simply push the door tray upwards from the base.

\*\* Make sure that the special plastic defrost tray which collects defrost water is clean at all times. If you want to remove the tray to clean it follow the instructions below :

1. Pull out the mains plug.

2. Use a screw driver & pull out firmly.

3. Wash the tray with water and dry.

4. Insert the drain pipe into the drain tray. See the sequence and operations and ensure drain pipe is inserted into drain tray.

## 7 Do's and Don'ts

---

Do- Clean your larder refrigerator regularly.

6aŽ =VVb dSi \_ VŠf S` V bagfck TWai  
cooked food and dairy products.

6aŽ =VVb XaV XadSe eZad S f\_ W

## ARAN EE DE AILŞ

Your new Beko product is guaranteed against the cost of breakdown repair for twelve months from the date of the original purchase.

. n - i' ço ere ?

## HOW TO OBTAIN SERVICE

Please see the order receipt or order form for the details of the required information.

You should also complete the details below; it will help us assist you when requesting service. (The model number is printed on the Instruction Booklet and the serial number is printed on the Rating Label affixed to the appliance)

**Model No:**      **Serial No:**      **Reference:**      **Department:**

---

# BEKO



BEKO plc  
Beko House  
Caxton Way  
Watford  
Hertfordshire  
WD18 8UF  
Tel: 0845 6004911  
Fax: 0845 6004922  
e-mail: [service@beko.co.uk](mailto:service@beko.co.uk)  
website: [www.beko.co.uk](http://www.beko.co.uk)

Printed in Turkey

Part no: **57 1414 0000**  
Revision no: **AD**